



**IA 50**  
2020  
MANAGER

For more information, contact:

Tara Murphy Forde, Managing Director, Capital & Impact

[tmurphy@globalpartnerships.org](mailto:tmurphy@globalpartnerships.org) | 206.456.7835

# Social Investment Fund 6.0

## BROADENING OPPORTUNITY

**12** active initiatives addressing different facets of poverty

## DEEPENING INCLUSION

**100%** of partners reaching people living on <\$5.50 PPP/person/day<sup>1</sup>  
**73%** Female Clients<sup>2</sup>  
**63%** Rural Clients<sup>2</sup>

## SERVING MILLIONS

**9,035,420** lives impacted as a result of investments<sup>3</sup>

## IMPROVING LIVES

**94%** of clients reporting an improvement in quality of life<sup>4</sup>

## IMPACT PERFORMANCE

### Fund Manager's Comments

As of September 30, 2020, Global Partnerships Social Investment Fund 6.0, LLC (SIF 6.0) had active investments across 12 initiatives, facilitating access to opportunity in livelihood creation, energy, health, and housing. During the third calendar quarter, SIF 6.0 disbursed, renewed, or rescheduled loans to enterprises in the following initiatives: Rural-Centered Finance with Education, Smallholder Farmer Market Access, Women-Centered Finance with Education, and Women-Centered Finance with Health, and broadened its geographic scope through a new Fund investment in Benin. The Fund continued to invest in social enterprises that serve people living below \$5.50 PPP/person/day. Fund concentration in women and rural-centered initiatives contributed to strong outreach to both female (73%) and rural (63%) clients, who tend to be disproportionately excluded from access to opportunity. Since Fund inception, SIF 6.0 investments have impacted an estimated 9.0MM lives, including 483k impacted during the third calendar quarter. Global Partnerships (GP) conducts targeted, mobile-based surveying known as Lean Data<sup>SM</sup> to better understand if and how those lives are improving. As of September 30, 2020, GP had completed Lean Data<sup>SM</sup> surveys with ten of the active partners in SIF 6.0, speaking with 3,406 clients across eight countries and three initiatives. While the type of outcomes varies by initiative, 94% of surveyed clients reported improved quality of life as a result of their engagement with SIF 6.0 partners.<sup>4</sup>

### Fund Overview

(As of September 30, 2020)

**\$55.5MM** Loans Outstanding

**\$137.7MM** Cumulative Loans Disbursed

**173** Cumulative Number of Loans

**55** Current Number of Partners

**73** Cumulative Number of Partners

#### Inception Date

October 8, 2015

#### Type of Fund

Debt

#### Fund Manager

GP Fund Management, LLC, a wholly-owned subsidiary of Global Partnerships

#### Investment Currency

US\$ and fully hedged local currency

## FINANCIAL PERFORMANCE

For Q3 2020 financial performance information, please visit our secure [investor portal](#). You can access the portal using your existing login credentials. If you need any assistance logging in to your account, please contact Sophie Moore ([smoore@globalpartnerships.org](mailto:smoore@globalpartnerships.org)).

<sup>1</sup> \$5.50 PPP/person/day. Purchasing Power Parity (PPP) is a metric that compares different countries' currencies through a "basket of goods" approach.

<sup>2</sup> % female: reported by 48 out of 55 current partners; % rural: reported by 46 out of 55 current partners.

<sup>3</sup> Estimated cumulative number of lives impacted as a result of investments in SIF 6.0 partners.

<sup>4</sup> Based on responses from 3,406 clients of SIF 6.0 partners via mobile, voice-based surveys known as Lean Data. Results are not statistically significant nor representative of the outcomes achieved by all investee partners. Results are intended to provide insight into whether investments can reach desired segments and support intended outcomes. Participating partners have or have had loans from SIF 6.0. All results are weighted by number of respondents and do not represent an average of enterprise averages.

# Social Investment Fund 6.0

## IMPACT PERFORMANCE



### Solar Lights

These partners supply solar lights and small solar home systems to rural households living beyond the grid.

**5,887,113** Cumulative Lives Impacted\*      **3** Current Partners\*\*



### Home Improvement Finance

These partners provide financial services and construction support to enable incremental home improvements for households living in poverty.

**270,143** Cumulative Lives Impacted\*      **3** Current Partners\*\*



### Women-Centered Finance with Education

These partners provide financial services and education for female microentrepreneurs.

**1,750,174** Cumulative Lives Impacted\*      **20** Current Partners\*\*



### Women-Centered Finance with Health

These partners provide financial services, preventive health education and access to health services for female microentrepreneurs and their families.

**205,659** Cumulative Lives Impacted\*      **5** Current Partners\*\*



### Rural-Centered Finance with Education

These partners provide working capital loans and education for rural microentrepreneurs.

**437,996** Cumulative Lives Impacted\*      **11** Current Partners\*\*



### Smallholder Farmer Inputs

These partners provide technical assistance and quality inputs including seeds and fertilizer to smallholder farmers.

**205,365** Cumulative Lives Impacted\*      **1** Current Partner\*\*

# Social Investment Fund 6.0

## IMPACT PERFORMANCE



### Cookstoves

These partners supply efficient cookstoves to households living in poverty.

**148,697** Cumulative Lives Impacted\*      **1** Current Partner\*\*



### Microentrepreneur Growth Finance

These partners provide productive use loans and specialized capacity building to support growth-stage microentrepreneurs.

**9,705** Cumulative Lives Impacted\*      **2** Current Partners\*\*



### Smallholder Farmer Market Access

These partners provide access to markets, technical assistance, and better pricing for smallholder farmers.

**90,695** Cumulative Lives Impacted\*      **12** Current Partners\*\*



### Artisan Market Access

These partners provide market access and price premiums to artisans.

**9,321** Cumulative Lives Impacted\*      **1** Current Partner\*\*



### Health Clinics

These partners provide high-quality, low-cost, primary and specialty health care to households living in poverty.

**13,455** Cumulative Lives Impacted\*      **1** Current Partner\*\*



### Productive Asset Finance

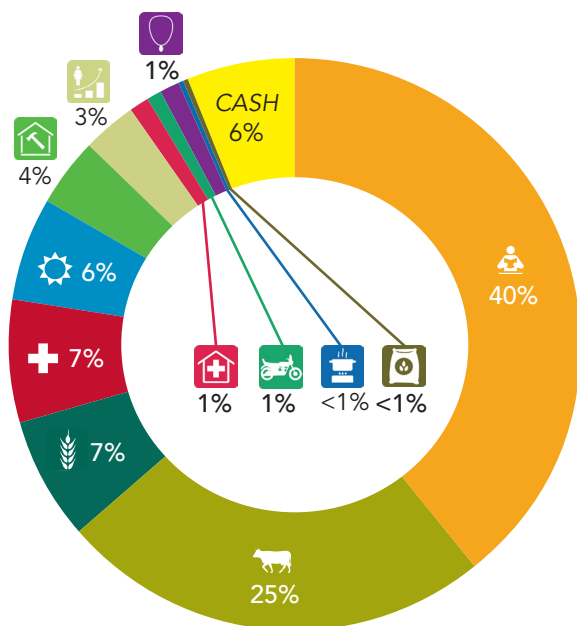
These partners provide tailored credit for productive assets along with support services for microentrepreneurs.

**7,096** Cumulative Lives Impacted\*      **1** Current Partner\*\*

# Social Investment Fund 6.0

## PORTFOLIO COMPOSITION

Percent of Current Loans Outstanding by Initiative



- Women-Centered Finance with Education
- Rural-Centered Finance with Education
- Solar Lights
- Women-Centered Finance with Health
- Home Improvement Finance
- Microentrepreneur Growth Finance
- Smallholder Farmer Market Access
- Artisan Market Access
- Cookstoves
- Productive Asset Finance
- Health Clinics
- Smallholder Farmer Inputs

Percent of Current Loans Outstanding by Country

- BENIN (<1%)**
  - ALIDé
- BOLIVIA (3%)**
  - CRECER
- COLOMBIA (8%)**
  - Contactar
  - Cooperandes
  - Finamiga
- COSTA RICA (<1%)**
  - Grameen Costa Rica
- ECUADOR (15%)**
  - COAC Jardin Azuayo
  - D-MIRO
  - ESPOIR
  - Insotec
  - VisionFund Ecuador
- EL SALVADOR (7%)**
  - Acceso El Salvador
  - CrediCampo
  - ENLACE
  - Habitat El Salvador
  - PADECOMSM
- GHANA (3%)**
  - PEG Africa
  - Sinapi Aba
- GUATEMALA (9%)**
  - Friendship Bridge
  - FUNDEA
  - Genesis
  - Manos Campesinas
  - Vision Fund Guatemala
- HAITI (1%)**
  - FINCA Haiti
- HONDURAS (1%)**
  - AHSETFIN
- IVORY COAST (<1%)**
  - PEG Africa
- KENYA (8%)**
  - Afrimac Nut Co.
  - Azuri
  - Batian Nut Co.
  - Envirofit
  - Juhudi Kilimo
  - Jumbo Nuts Ltd.
  - KWMB
  - Musoni
  - Sagana Nuts Ltd.
  - Sidai
  - Village Nut Co.
- LIBERIA (1%)**
  - BRAC Liberia
- MEXICO (6%)**
  - Itaca
  - Reina Madre
  - VisionFund Mexico
- NICARAGUA (5%)**
  - Aldea Global
  - COPROEXNIC
  - FDL
  - ProMujer Nicaragua
- PERU (4%)**
  - Coop Sol y Café
  - Edpyme Alternativa
- RWANDA (2%)**
  - Rwanda Trading Co.
- TANZANIA (7%)**
  - ASA Tanzania
  - BRAC Tanzania
  - FINCA Tanzania
- UGANDA (7%)**
  - BRAC Uganda
  - FINCA Uganda
- ZAMBIA (1%)**
  - Agora Microfinance
- MULTI-COUNTRY (6%)**
  - Greenlight Planet
  - NOVICA
- CASH (6%)**

Note: All percentages have been rounded to the nearest whole number.